



BY JOSH + JENNA

What is Plan Proofing?

What is Plan Proofing?

Hello!

Our goal is the same as yours; to ensure our client's are getting the best possible result for their home. Our service predominantly focuses on the interiors (furniture placement, joinery design, lighting, fixtures, materials, etc.) and ensuring the floor plan accommodates the way the clients want to live in their home. When we are proofing plans, we consider a home holistically and how all aspects will work together from the floor plan and finishes, to the lighting and styling.

We then provide recommendations, design solutions and suggestions on how the plans may be amended to create a more cohesive and considered design.

We believe strongly in collaboration over competition and will always be respectful, credit accordingly, and we will never take credit for anyone else's work. We, just like any other consultant, use our expertise to assist in making the project a success. We appreciate the contribution you have made to the project so far and know that it takes a village to build a home!

Throughout our 30+ years in the design and construction industry, we also understand construction and how cost can play a role in the design outcomes. We appreciate conversations have happened prior to us jumping into this project, and simply take the plans for what they are, there is no judgement.

We also appreciate that our changes may bring additional costs to your clients. We are always striving to make minimal changes where possible, but in the case where we really believe an amendment will improve the interior spaces, we make the clients fully aware of the cost implications and ask them to have a conversation with their build team to decide on the best way forward.

We hope to cross paths in the future!

Josh & Jenna
Directors of Plan Proofing



Who are we?

We are Josh & Jenna

Josh —

Project Manager & Plumber

Josh has over 20 years of trade and construction experience and has worked for the past 10 years as a project manager working on multimillion-dollar projects and overseeing the coordination of services, subcontractors and trades.

Josh has a solid understanding of construction, project management, and hydraulic and civil design and also has an excellent eye for design. He brings an invaluable set of skills to any project.

Jenna —

Interior Designer & Educator

Jenna is an interior designer and educator and has worked the past 10 years in both retail and residential design. She has traveled the world designing stores for Cotton On Group and has won a national interior design award for best residential design in Australia for her very own, Canning Cottage.

Her passion for design led her to start her very own design school, 6 years ago aptly named...Design School! She teaches hundreds of students Interior Decoration, alongside her team of trainers.

Why has Plan Proofing been engaged?

Usually we are engaged because the client/s :

- May feel overwhelmed with all of the design selections and decisions
- Want a holistic plan that covers everything from furniture layouts, lighting design, joinery design and material and finish selections
- Struggling to visualise what their home will look like from 2D plans
- Have been following our design and renovation projects for a long time and trust us to bring our design experience into their home
- Lack confidence in decision making and experiencing "decision fatigue" which could be delaying the process
- Are too busy and would like help from a consultant (like us) to help them bring their ideas together into a cohesive concept

What do we cover?



Our Services:

Our services on each project differ as each project is guided by the client's brief. We focus on the below subjects depending on the client preferences;

- Interior design
- Spatial planning
- Furniture layouts
- Lighting design
- Material selections
- 3D renders
- Mood boards
- Design & styling tips
- Colour schemes
- And more!

What we will need from you -

Access to plans:

In order to help our client's with their home, we kindly ask for access to a set of plans to be able to recreate their home in 3D, and do some basic mark ups like a lighting plan to communicate our ideas.

We appreciate that you own the plans and we will not reproduce these to claim as our own.

Check out some of our case studies @plan_proofing on Instagram or www.planproofing.com.au

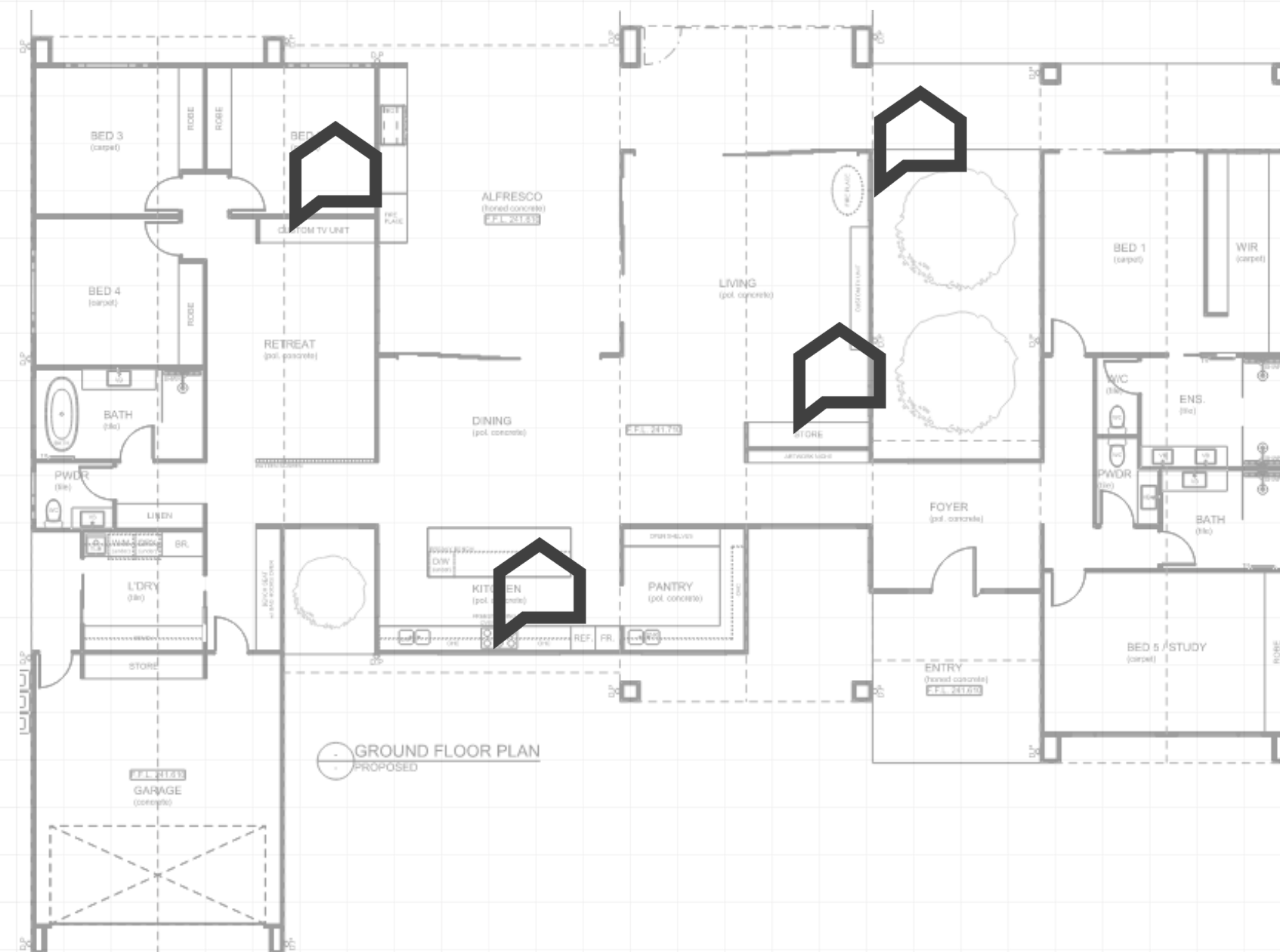
Mark up examples:

The floor plan

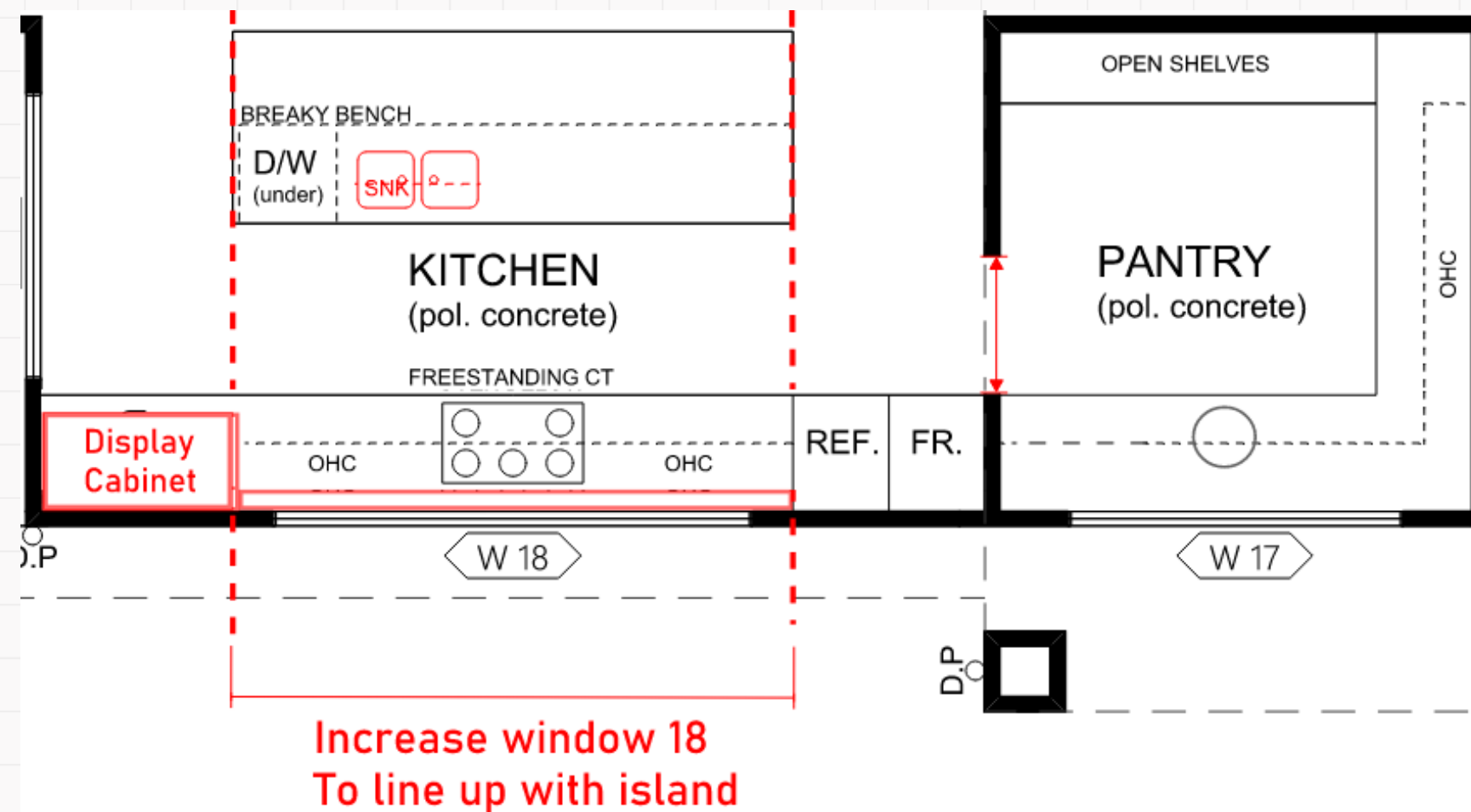
- considerations

These are some of the changes we'd recommend after looking at the furniture layout and joinery design in more detail:

- Review of how joinery / kitchen design will interact with kitchen splash window, keeping in mind this will have impact on the facade.
- Move TV unit to West wall to allow for a better furniture layout.
- Reconfigure artwork recess to create daybed in lounge room.
- Review window behind fireplace in lounge. Selection of fireplace is required to ensure safe distance from window and room functionality.
- Updated lighting plan to suit furniture placement and use of room.



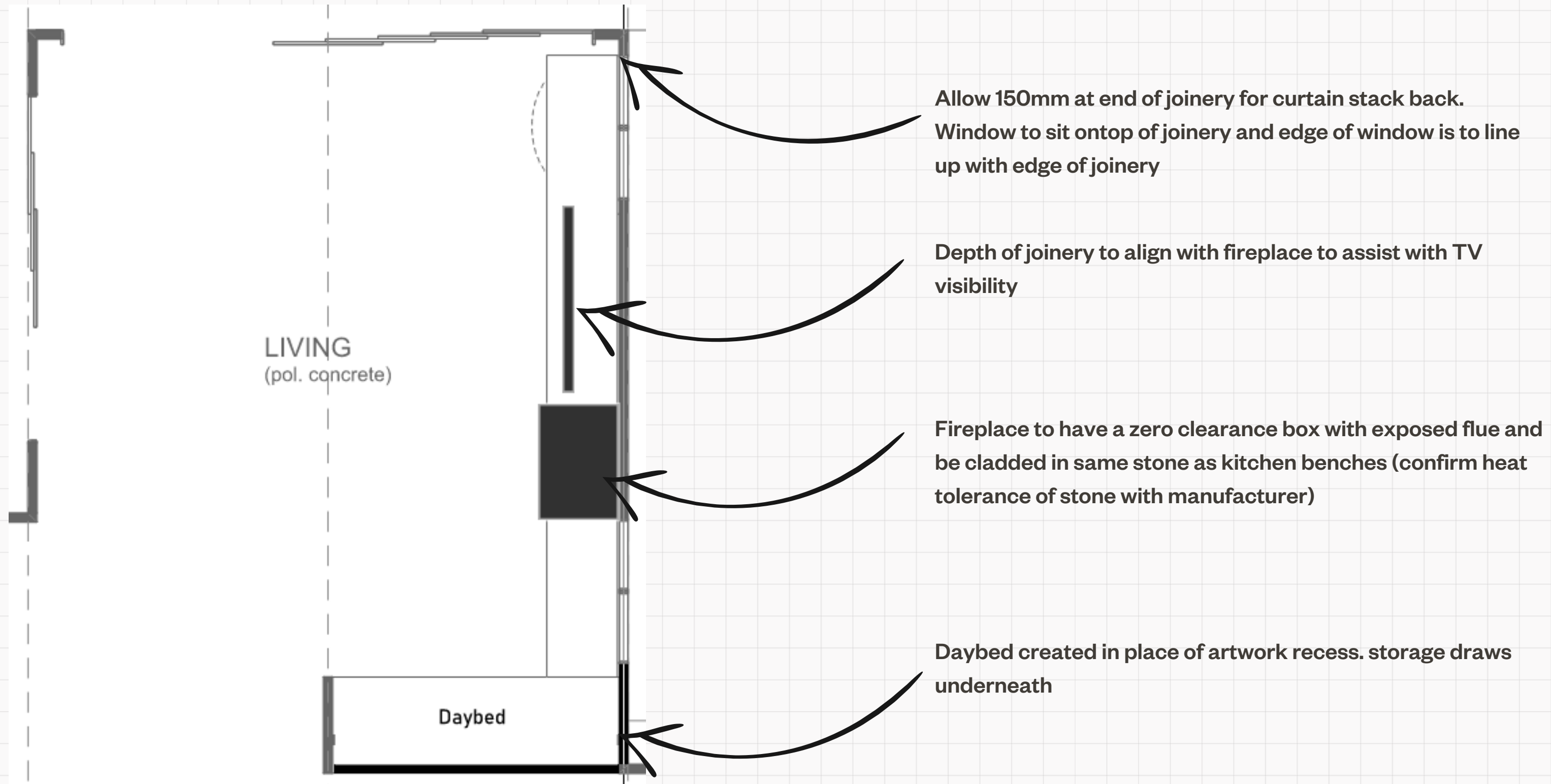
The kitchen - amendments



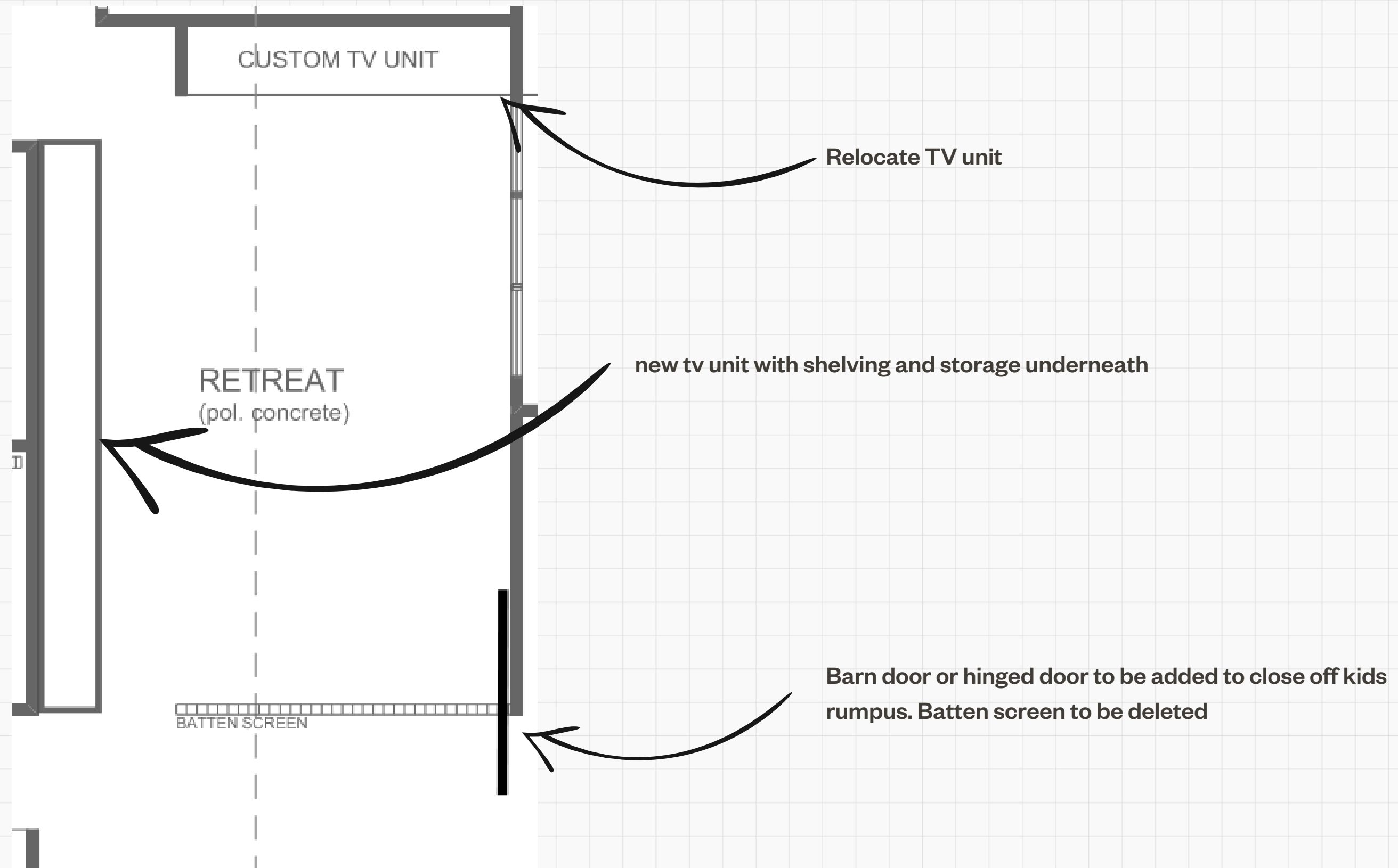
Kitchen considerations

1. 100mm stone ledge behind cooktop, to sit underside of window sill
2. Display cabinet added on east side
3. Benches made 700 deep along south wall, running into pantry. Pantry entrance to shift north accordingly
4. Sink relocated into island next to DW
5. Box style overhead to house rangehood
6. splash window size to increase in length to fit tight between joinery and line up with island
7. Relocated pantry sink

Living room - amendments



Rumpus - amendments



Thank you.